

# Line Graphs

## Drawing Line Graphs — just Join the Crosses

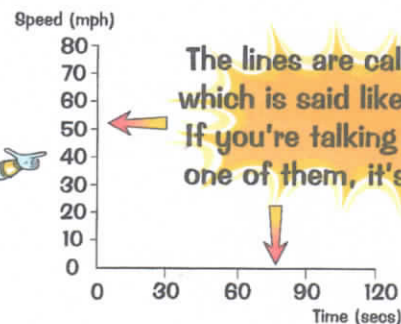
**EXAMPLE:** The table to the right shows the speed of Zanf the Genie at different times during his last egg and spoon race. Plot the speeds on a line graph.

Time	Speed
30 secs	21 mph
60 secs	75 mph
90 secs	68 mph
120 secs	33 mph

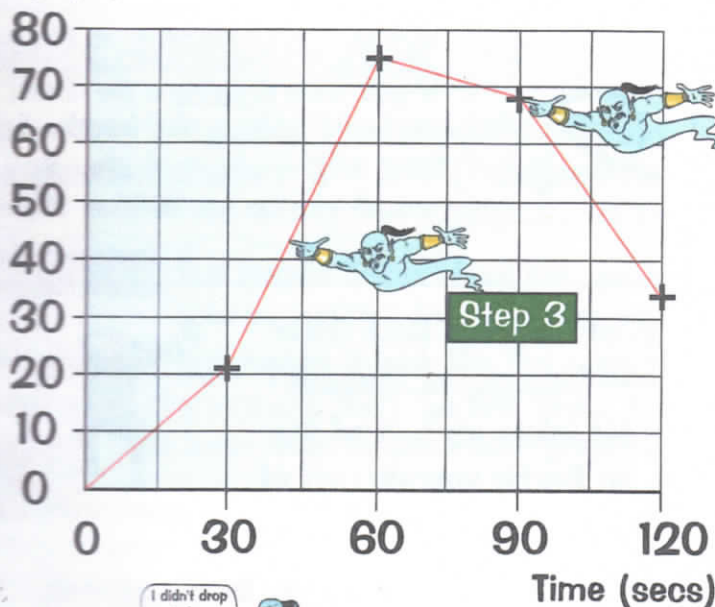
Here's how it's done:

### Step 1

First draw the lines on the bottom and side of the graph. You have to choose the numbers so that all the speeds and times will fit on.



Speed (mph)



I didn't drop a single egg.



Hmm...



### Step 2

Now draw a CROSS for each pair of times and speeds. First find the time along the bottom and the speed up the side. Then move a finger up from the time and another finger across from the speed. Draw the cross where they meet. (It's just like drawing coordinates on page 76.)

### Step 3

Finally, join the crosses with LINES. We don't know how Zanf's speed changed between the crosses, so it's best to use STRAIGHT lines for this graph.

## Drawing line graphs makes me cross (X)...

Now that you've seen how to draw bar charts, pictograms and line graphs, you could try drawing some of your own. How about a bar chart of hair colour for your class, or a pictogram of your friends' favourite foods...